

Find Your Fit - my shift dress -

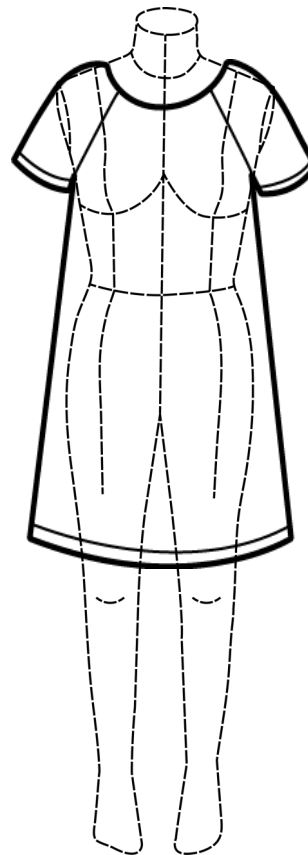


About the fit

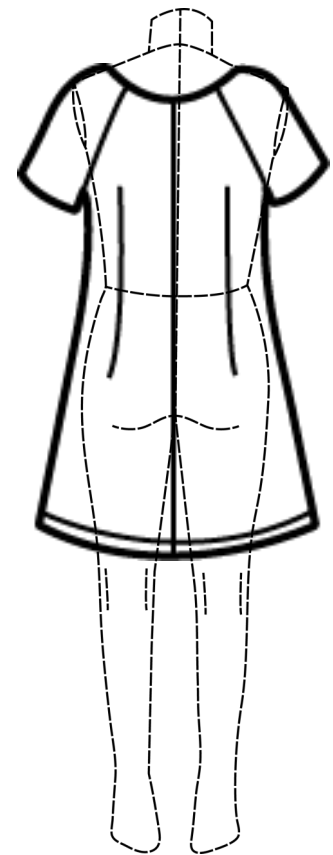
My shift dress is fitted in the bust and semi-fitted in the hip. This picture shows the short sleeve dress option.

Pattern Details

- Round neckline
- Raglan Sleeves
- Centre Back seam
- Back darts for a sculptured look.
- Bias binding used to easily finish the neck edge
- Top, tunic or dress option.
- Short sleeve, mid sleeve or strap options.
- Can be made in a woven or knit fabric.



Front View



Back View

Finished Garment Measurements for 'my shift dress'

Size	Bust	Waist	Hip	Length dress - shoulder to hem
Size XS	39" (99cm)	34" (86cm)	43" (109cm)	34½" (88cm)
Size S	41" (104cm)	36" (91cm)	45" (114cm)	35" (89cm)
Size M	43" (109cm)	38" (96cm)	47" (119cm)	35½" (90cm)
Size L	45" (114cm)	40" (101cm)	49" (124cm)	36" (91cm)
Size XL	47" (119cm)	42" (106cm)	51" (129cm)	36½" (92cm)
Size XXL	49" (124cm)	44" (111cm)	53" (134cm)	37" (93cm)

General Guide to ease -	Fitted 0-3" (0 - 8cm)	Semi - Fitted 4"- 6" (10 - 15.5cm)	Loose - Fitted 7" + (18cm +)
-------------------------	--------------------------	---------------------------------------	---------------------------------

NOTE: I aim to measure at least one size, usually a Size M. Generally speaking the difference between sizes is 2" (5cm) in width and 3/8" (1cm) in length. The length of the dress is calculated for the height of 5 feet 8 inches (173cm). To lengthen or shorten your shift dress for any option, this is done at the hem line on the pattern.

Ease Key

How much ease is in your garment? Compare the finished garment measurements to your body measurements to determine the amount of ease.

The difference between measurements is the actual amount of ease the pattern has. With this information, you can double check your pattern's ease allowance, ie. How loose or tight it will be on your body.

For more information on ease, go to the tutorial section at my website:

www.passionatelysewn.com.au